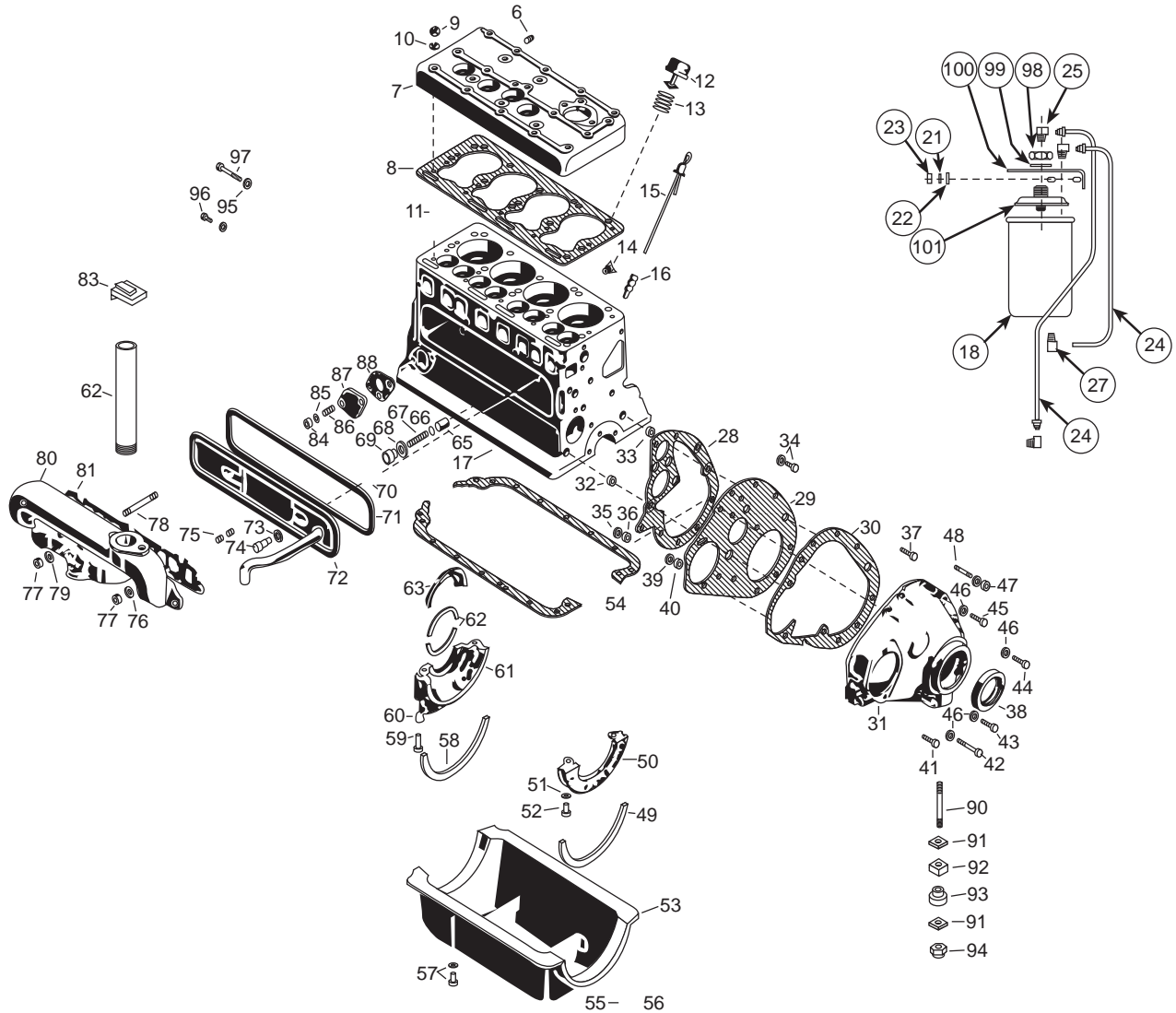


ENGINE BLOCK AND EXTERNAL PARTS



ITEM	DESCRIPTION	PART NO.	QTY.	1	2	3	4	5	6	7	8	9
				#	#	#						
6	Pipe Plug Temperature Gauge Hole in Cylinder Head	*	1									
7	Cylinder Head	*	1									
8	Cylinder Head Gasket	*	1									
9	Cylinder Head Nut	*	15									
10	Washer - Cylinder Head Nut	*	15									
11	Stud - Cylinder Head to Block	*	15									
12	Oil Filler Cap Assembly	*	1									
13	Oil Filler Tube	S8612-2	1									
14	Drain Cock	*	1									
15	Oil Gauge Rod	*	1									
16	Oil Rod Support	*	1									
17	Block	*	1									
18	Oil Filter	S12634-1 or -2	1	•	X	X						
18	Oil Filter (old Style)	See Note 1	1	X	•	•						
20	Stud - Oil Filter to Cylinder Head	*	2									
21	Lockwasher - Oil Filter to Cylinder Head	E106A-3	2	•	X	X						
22	Washer - Oil Filter to Cylinder Head	S9262-121	2	•	X	X						
23	Hex Nut - Oil Filter to Cylinder Head	5/16 - 18	2	•	X	X						

#

Index of Sub Assemblies

Part Numbers

Index of Sub Assemblies

Part Numbers

Index of Sub Assemblies

Part Numbers

Index of Sub Assemblies

Part Numbers

		Use only the parts marked "X" in the column under the heading number called for in the model index page.										
# Indicates a Change This Printing												
ITEM	DESCRIPTION	PART NO.	QTY.	1	2	3	4	5	6	7	8	9
24	Oil Line, Inlet	T12185-2	1	•	X	•						
	Oil Line, Inlet	T13452-1	1		•	X						
24	Oil Line, Outlet	T12186	1	•	X	•						
	Oil Line, Outlet	T13453	1		•	X						
25	Elbow, Oil Line	T9116	2 or 3	•	X	X						
27	Tee Fitting	T12184	1	•	X	X						
	Front End Plate Assembly Includes:	*	1									
28	Gasket - Front End Plage	*	1									
29	Front End Plate	*	1									
30	Gasket, Gear Cover	*	1									
31	Gear Cover	*	1									
32	Ring Dowel, Front Plate	*	1									
33	Ring Dowel, Gear Cover	*	1									
34	Screw and Lockwasher Assembly	*	1									
35	Nut - Gear Cover to End Plate	*	1									
36	Lockwasher - Gear Cover to End Plate	*	1									
37	Screw, Gear Cover to End Plate	*	1									
38	Oil Seal, Crankshaft	*	1									
39	Nut - Gear Cover Dowel Screw	*	1									
40	Lockwasher - Gear Cover Dowel Screw	*	1									
41	Gear Cover Dowel Screw	*	1									
42	Hex Head Screw - Gear Cover to Filler Block	*	1									
43	Hex Head Screw - Gear Cover to Filler Block	*	3									
44	Hex Head Screw - Gear Cover to Block	*	1									
45	Hex Head Screw - Gear Cover to Block (At Ring Dowel)	*	1									
46	Lockwasher - Gear Cover Mounting Screws	*	8									
47	Hex Nut - Gear Cover to Stud	*	2									
48	Stud - Gear Cover to Block (Upper Holes)	*	1									
49	Cork - Oil Pan to Front Filler Block	*	1									
50	Front Filler Block	*	1									
51	Lockwasher - Front Filler Block to Engine	*	2									
52	Hex Head Screw - Front Filler Block to Engine Block	*	2									
	Oil Pan Assembly Includes:	*	1									
53	Oil Pan	*	1									
54	Oil Pan Gasket (Not Included in Oil Pan Assembly)	*	1									
55	Gasket - Oil Pan Drain Plug	*	1									
56	Oil Pan Drain Plug	*	1									
57	Screw and Lockwasher Assembly - Oil Pan to Block	*	14									
58	Cork - Oil Pan to Rear Filler Block	*	1									
59	Hex Head Screw - Rear Filler Block to Engine Block	*	2									
60	Lockwasher - Rear Filler Block to Engine Block	*	2									
61	Rear Filler Block	*	1									
	Rear Bearing Oil Guard Assembly Includes:	*	1									
62	Seal - Rear Filler Block	*	2									
63	Rear Bearing Oil Guard	*	1									
64	Felt - Rear Bearing Oil Guard	*	1									
65	Oil Pressure Relief Valve	*	1									
66	Washer - Oil Pressure Relief Spring Adjusting	*	As Req'd									
67	Oil Pressure Relief Valve Spring	*	1									
68	Gasket - Oil Pressure Relief Valve	*	1									
69	Plug - Oil Pressure Relief Valve	*	1									
70	Stud - Valve Chamber Cover	*	2									
71	Gasket - Valve Chamber Cover	*	1									
72	Valve Chamber Cover	*	1									
73	Gasket - Valve Chamber Cover Nut	*	2									
74	Hex Nut - Valve Chamber Cover	*	2									
75	Stud - Manifold to Block	*	6									
76	Washer - Manifold to Block - End and Center Studs	*	3									
77	Hex Nut - Manifold to Block	*	7									

Index of Sub Assemblies
 Sub Assembly Illustration
 Index of Sub Assemblies
 Sub Assembly Illustration
 Index of Sub Assemblies
 Sub Assembly Illustration
 Index of Sub Assemblies
 Sub Assembly Illustration

Use only the parts marked "X" in the column under the heading number called for in the model index page.

Indicates a Change This Printing

ITEM	DESCRIPTION	PART NO.	QTY.	1	2	3	4	5	6	7	8	9
78	Stud - Manifold to Block (Center Hole)	*	1									
79	Washer - Manifold to Block	*	4									
80	Manifold	*	1									
81	Manifold Gasket	*	1									
82	Exhaust Pipe (Without Muffler)	T11176-1	1	X	X	X						
83	Rain Cap	S9563-2	1	X	X	X						
	Optional Muffler Kit, Includes:	K203	1	•	•	X						
	Muffler	M12620	1	•	•	X						
	Exhaust Pipe	T11176-5 ø	1	•	•	X						
	Pipe Nipple	S8612-8	1	•	•	X						
	Rain Cap	S9563-2	1	•	•	X						
84	Nut - Fuel Pump Hole in Block	*	2									
85	Lockwasher - Fuel Pump Hole in Block	*	2									
86	Stud - Fuel Pump Hole in Block	*	2									
87	Cover - Fuel Pump Hole in Block	*	1									
88	Gasket - Fuel Pump Hole in Block	*	1									
89	Oil Pressure Gauge	S8163	1	X	X	X						
90	Stud - Front Engine Mounting	T8911	1	X	X	X						
91	Washer - Front Engine Mounting	T9054	2	X	X	X						
92	Engine Mount - Front Engine Mounting	T8823	2	X	X	X						
93	Rubber Washer	T11135-1	1	X	X	X						
94	Huglock Nut Front Engine Mounting	T9187-3	1	X	X	X						
95	Lockwasher - Engine Rear End Plate to Engine	T9695-4	5	X	X	X						
96	Dowel Screw - Engine Rear End Plate to Engine	T8833-2	2	X	X	X						
97	Screw - Engine Rear End Plate to Engine	T8833-1	3	X	X	X						
98	Hex Jam Nut	3/4-16	1	•	X	X						
99	Lockwasher	T9695-12	1	•	X	X						
100	Filter Bracket	M10369	1	•	X	•						
100	Filter Bracket	M12375	1	•	•	X						
101	Filter Adapter (Base)	S12635	1	•	X	X						
102	Tee Adapter Used on Electric Start Only	T13555	1	•	•	X						
103	Oil Pressure Switch Above Code 7200	S14446	1	•	•	X						
*	These parts are not normally stocked by Lincoln. For fastest service on these parts, order from your area Continental parts distributor using the part description and <u>engine</u> nameplate data.											
Note 1	Filter cartridge models no longer stocked by Lincoln. To replace with lower cost expendable type oil filter, order Kit S12642.											